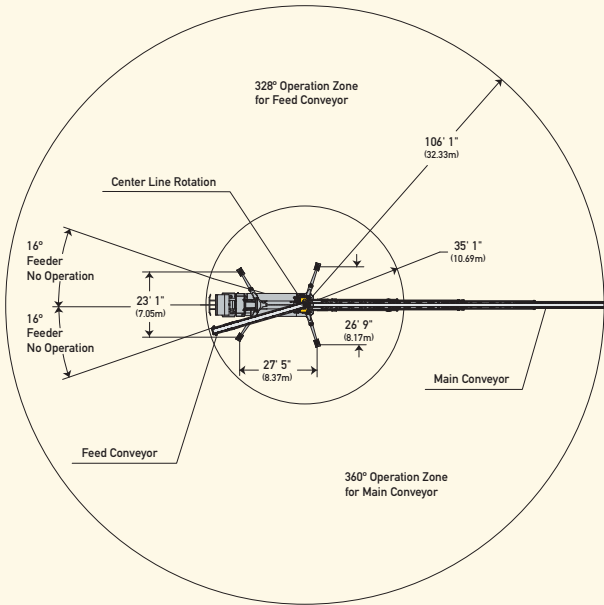
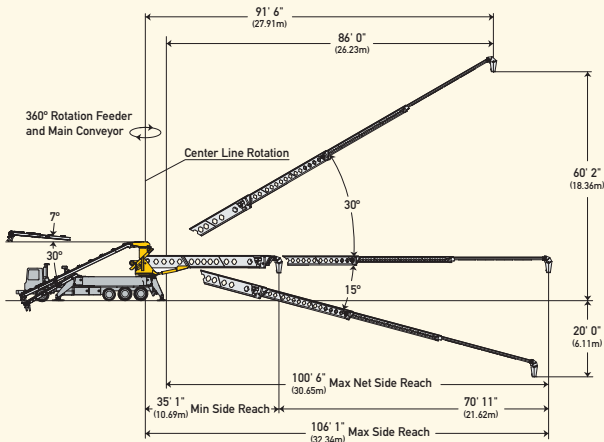
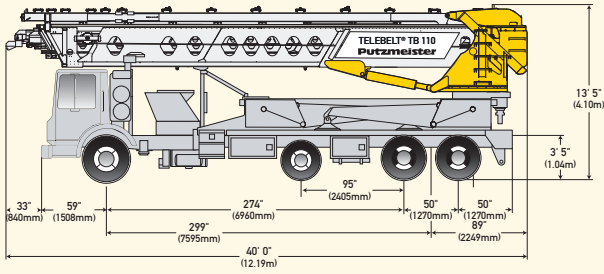


# Telebelt® TB 110 Specifications



## Conveyors

### Conveyor horizontal reach

Maximum at 0°	106' 1"	(32.34m)
Maximum at 30°	91' 6"	(27.91m)

### Conveyor belt width

	18"	(457mm)
--	-----	---------

### Feed conveyor length

	38' 0"	(11.60m)
--	--------	----------

### Feed conveyor belt width

	18"	(457mm)
--	-----	---------

### Trunk/end hose length

	15' 0"	(4.57m)
--	--------	---------

### Discharge height from grade

Maximum at 30°	60' 2"	(18.36m)
Maximum at -15°	-20' 0"	(-6.11m)

## Main & feed conveyors

Observed capacity at 0°	5.00 yd <sup>3</sup> /min	(4.00m <sup>3</sup> /min)
Observed capacity at 20°	5.00 yd <sup>3</sup> /min	(4.00m <sup>3</sup> /min)

## Outriggers

### Net reach beyond outriggers —

at 0°	100' 6"	(30.65m)
at 30°	86' 0"	(26.23m)

### Outrigger spread L-R — front manual

out, hydraulic extended down	23' 1"	(7.05m)
------------------------------	--------	---------

### Outrigger spread L-R — rear manual

out, hydraulic extended down	26' 9"	(8.17m)
------------------------------	--------	---------

### Outrigger spread front to rear

	27' 5"	(8.37m)
--	--------	---------

## General Specifications

Water tank capacity	200 gal	(757 L)
Hydraulic oil tank capacity (with cooler)	150 gal	(568L)

## Truck Specifications \*•+

Weight	20,525 lbs	(9,310kg)
Engine horsepower	405 hp	(302kW)
Wheelbase	299"	(7,595mm)
Cab height	104"	(2,642mm)
Steering radius (outside)	45' 6"	(13.87m)
Steering angle	30°	
Fuel tank capacity	80 gal	(303L)
Transmission	Mack T310 10-Speed	

## Transport Axle Weights \*•+

Steering	19,008 lbs	(8,621kg)
Pusher	10,000 lbs	(4,535kg)
Tandem	33,754 lbs	(15,309kg)
Total	62,762 lbs	(28,465kg)

Maximum theoretical values listed.

\* Truck dimensions will vary with different truck makes, models and specifications.

• Weights are approximate and include truck, fuel, and 100 gal (379L) of water.

+ All specifications apply to units mounted on Mack MRU 613.

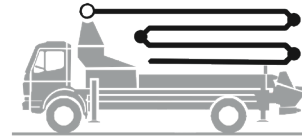


Putzmeister America, Inc.  
1733 90th Street  
Sturtevant, WI 53177 USA

Phone (262) 886-3200  
Toll-free (800) 884-7210  
Fax (262) 884-6338

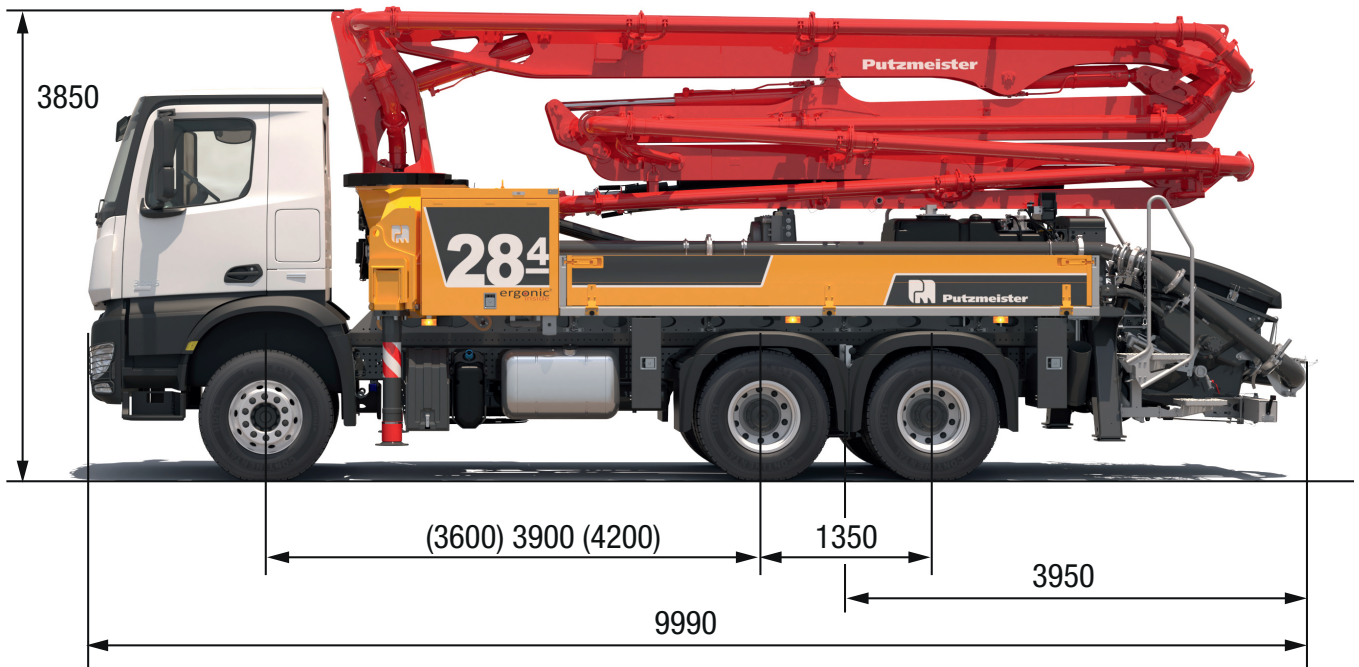
# Truck-mounted concrete pump BSF 28-4.11 H

Output up to 160 m<sup>3</sup>/h  
 Delivery pressure up to 130 bar\*



**.16 H**  
**.15 i LS**

**ergonic<sup>®</sup>**  
 inside **3**



Note: Standard version. Dimensions and weights depend on truck, pump model and equipment.  
 Dimensions in mm. Example based on Mercedes Benz Arocs 2636 with a 15 i LS core pump.  
 For illustration only.

**160 m<sup>3</sup>/h = 209 yd<sup>3</sup>/h**

**108 m<sup>3</sup>/h = 141 yd<sup>3</sup>/h**

## Technical data

**NO BOOM!**

Boom M 28-4		
Seams		4
Reach height	m	17.1
Horizontal cross reach	m	23.4
Reach depth max	m	20.8
Unfolding height	m	6.3
End hose length	m	3
Folding system		
Delivery line		DN 100

Pump		BSF	.11 H	<b>.16 H</b>	.15 i LS *
Rod side	Output	m <sup>3</sup> /h	-	<b>160</b>	-
	Delivery pressure	bar	-	<b>85</b>	-
	Strokes	1/min.	-	<b>31</b>	-
Piston side	Output	m <sup>3</sup> /h	110	<b>108</b>	150
	Delivery pressure	bar	78	<b>130</b>	85
	Strokes	1/min.	32	<b>21</b>	24
	Delivery cylinder	Ø mm	230	<b>230</b>	250
	Stroke	mm	1400	<b>2100</b>	2100

Delivery line boom max. 85 bar. All data maximum theoretical.  
 \* for CE markets only

# Putzmeister Thom-Katts®

For powerful performance and rugged reliability, we took our big boom pump expertise and applied it to our respected Thom-Katt® trailer pumps. Engineered in America for over 25 years, these Katts have been continually enhanced as part of our ongoing commitment to product excellence. Featuring rugged construction and an angled hopper, they handle the rigors of any job site and are easy to fill and clean. Rely on them to pump a variety of materials, handle the harshest mixes and tackle several difficult applications. Easy to operate and inexpensive to maintain, these units provide faster setup, smoother pumping, easier cleanup and long term dependability... features you've come to expect from a leader in concrete pump technology. Find out more by contacting Putzmeister America today.

## The Thom-Katt® Series Family



Thom-Katt® Series



Allentown Models



TKB Series Hydraulic Ball Valve Pumps  
Refer to separate specification sheet.



VS Series • Vehicle Mounted  
Refer to separate specification sheet.

## Specifications

	Allentown Models		Standard Trailer-Mounted Models			High Pressure (HP) Models	
Performance	TK 10	TK 20	TK 40	TK 50	TK 70	TK 15HP	TK 60HP
Maximum volume output <sup>†</sup>	7 yd <sup>3</sup> /hr (4.6m <sup>3</sup> /hr)	17 yd <sup>3</sup> /hr (13m <sup>3</sup> /hr)	40 yd <sup>3</sup> /hr (30m <sup>3</sup> /hr)	54 yd <sup>3</sup> /hr (41m <sup>3</sup> /hr)	74 yd <sup>3</sup> /hr (57m <sup>3</sup> /hr)	15 yd <sup>3</sup> /hr (11m <sup>3</sup> /hr)	60 yd <sup>3</sup> /hr (46m <sup>3</sup> /hr)
Maximum concrete pressure	2085 psi (144 bar)	2000 psi (138 bar)	1150 psi (79 bar)	1150 psi (79 bar)	1130 psi (78 bar)	1500 psi (103 bar)	1450 psi (100 bar)
Maximum aggregate size	0.75" (19mm)	1" (25mm)	1.5" (38mm)	1.5" (38mm)	1.5" (38mm)	0.75" (19mm)	1.5" (38mm)
Technical Information							
Material cylinders	3" x 24" (76x610mm)	4.5" x 30" (114x762mm)	6" x 39" (150x1000mm)	6" x 39" (150x1000mm)	7" x 39" (180x1000mm)	4" x 39" (102x1000mm)	6" x 39" (150x1000mm)
Maximum strokes per minute	36	31	32	43	45	24	48
Variable volume control	0 to full	0 to full	0 to full	0 to full	0 to full	0 to full	0 to full
S-Valve (cast)	3" x 3" (76x76mm)	4.5" x 4" (114x101mm)	6" x 5" (150x125mm)	6" x 5" (150x125mm)	7" x 5" (180x125mm)	Fab 4" x 4" (100x100mm)	6" x 5" (150x125mm)
Number of shift cylinders	1	1	2	2	2	1	2
Hydraulic tank capacity	37 gal (140L)	38 gal (144L)	38 gal (144L)	38 gal (144L)	38 gal (144L)	38 gal (144L)	38 gal (144L)
Hopper height	48" (1219mm)	49" (1245mm)	49" (1245mm)	49" (1245mm)	49" (1245mm)	47" (1194mm)	49" (1245mm)
Hopper capacity	8 cu ft (227L)	9.5 cu ft (270L)	9.5 cu ft (270L)	9.5 cu ft (270L)	9.5 cu ft (270L)	10 cu ft (285L)*	9.5 cu ft (270L)
Outlet diameter	3" HD (76mm)	4" HD (101mm)	5" HD (125mm)	5" HD (125mm)	5" HD (125mm)	4" HD (102mm)	5" HD (125mm)
Engine							
Manufacturer's model <small>(all water-cooled except TK 40, TK 15HP)</small>	Deutz D2011L04i	Deutz TD2011L04i	Deutz TD2011L04i	Deutz TCD2012L04m	Deutz TCD2012L04m	Deutz TD2011L04i	Deutz TCD2012L042V
Horsepower	61 hp (45kW)	68 hp (51kW)	67 hp (50kW)	96 hp (72kW)	96 hp (72kW)	67 hp (50kW)	131 hp (98kW)
Fuel tank capacity	15 gal (56L)	22 gal (83L)	26 gal (98L)	26 gal (98L)	26 gal (98L)	26 gal (98L)	26 gal (98L)
Trailer							
Axle	Single	Single	Single	Single	Single	Single	Single
Axle capacity	5200 lbs (2258kg)	7000 lbs (3175kg)	7000 lbs (3175kg)	7000 lbs (3175kg)	7000 lbs (3175kg)	7000 lbs (3175kg)	7000 lbs (3175kg)
Tires/Load range	ST 225/75R15D	LT 235/85R16G	LT 235/85R16G	LT 235/85R16G	LT 235/85R16G	LT 235/85R16G	LT 235/85R16G
Brakes	Electric	Electric	Electric	Electric	Electric	Electric	Electric
Outriggers	Manual	Manual	Manual	Manual	Manual	Manual	Manual
Dimensions							
Length	148" (3.75m)	174" (4.42m)	191" (4.85m)	191" (4.85m)	191" (4.85m)	183" (4.65m)	191" (4.85m)
Width	64" (1.62m)	74.5" (1.89m)	74.5" (1.89m)	74.5" (1.89m)	74.5" (1.89m)	74.5" (1.89m)	74.5" (1.89m)
Height	62" (1.57m)	70" (1.78m)	71" (1.80m)	71" (1.80m)	71" (1.80m)	69" (1.75m)	71" (1.80m)
Weight (approx.)	4000 lbs (1814kg)	4800 lbs (2177kg)	5600 lbs (2540kg)	6000 lbs (2720kg)	6400 lbs (2900kg)	5100 lbs (2315kg)	6400 lbs (2900kg)

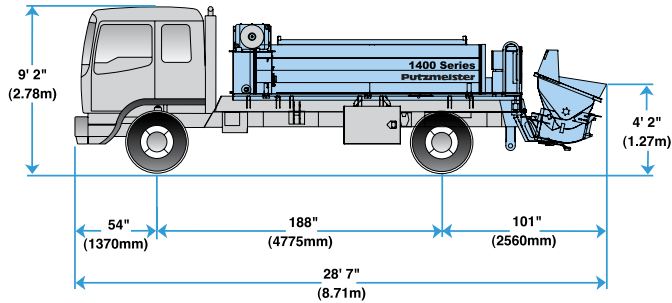
<sup>†</sup> Optional electric versions have decreased output. • Specially reinforced hopper for high pressure applications.  
Maximum theoretical values listed. Maximum attainable distances depend on concrete mix design, pipeline diameter and specific job site conditions. Note: Max output and pressure can't be achieved simultaneously.  
Specifications subject to change without prior notice. Weights vary with options selected. Photos for illustrative purposes only. Refer to Putzmeister operational manual for safe and proper equipment operation.

# Specifications

## Truck-Mounted City Pump

Model: Putzmeister CP2112L

City Pump



### CP 1409H Truck-Mounted Specifications

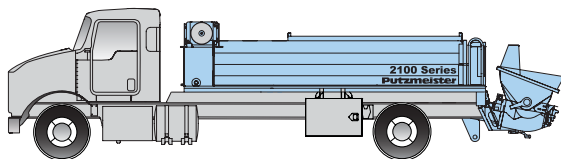
Based on Model GMC TT7500

Length	28' 7"	(8.71m)
Width	8' 2"	(2.50m)
Height	9' 2"	(2.78m)
Wheelbase	188"	(4,775mm)
Front axle weight	8,134 lbs	(3,689kg)
Rear axle weight	12,721 lbs	(5,770kg)
Approx. total weight	20,855 lbs	(9,460kg)

### Power

Truck engine	250 hp @ 2200 rpm
Pump	PTO-driven through distribution gearbox
Fuel tank capacity	2 x 50 gallons (2 x 190L)

Weights are approximate and include pump, truck, full hydraulic oil, driver and some fuel. Dimensions will vary with different truck makes, models and specifications.



### CP 2112L & CP 2116H Truck-Mounted Concrete Pumps

Please consult factory for dimensions and specifications on this model.

Pump Specifications	1409H	2112L	2116H
Output — rod side	117 yd <sup>3</sup> /hr (90m <sup>3</sup> /hr)	142 yd <sup>3</sup> /hr (109m <sup>3</sup> /hr)	210 yd <sup>3</sup> /hr (160m <sup>3</sup> /hr)
piston side	78 yd <sup>3</sup> /hr (60m <sup>3</sup> /hr)	85 yd <sup>3</sup> /hr (65m <sup>3</sup> /hr)	146 yd <sup>3</sup> /hr (112m <sup>3</sup> /hr)
Pressure — rod side	1015 psi (70 bar)	1015 psi (70 bar)	1233 psi (85 bar)
piston side	1537 psi (106 bar)*	1624 psi (112 bar)*	1855 psi (130 bar)*
Horizontal pumping distance* —			
rod side	1500' (457m)	CF**	CF**
piston side	2000' (610m)	CF**	CF**
Vertical pumping distance* —			
rod side	540' (165m)	CF**	CF**
piston side	750' (229m)	CF**	CF**
Material cylinder diameter	8" (200mm)	9" (230mm)	9" (230mm)
Stroke length	55" (1400mm)	83" (2100mm)	83" (2100mm)
Maximum strokes per minute —			
rod side	36	21	31
piston side	25	13	21
Volume control	0-Full	0-Full	0-Full
Vibrator	Standard	Standard	Standard
Hard-chromed material cylinder	Standard	Standard	Standard
Hydraulic system	Free Flow	Free Flow	Free Flow
Hydraulic system pressure	5075 psi (350 bar)	5075 psi (350 bar)	5075 psi (350 bar)
Differential cylinder diameter	4.3" (110mm)	5.1" (130mm)	5.5" (140mm)
Rod diameter	2.5" (63mm)	3.1" (80mm)	3.1" (80mm)
Maximum size aggregate	2.5" (63mm)	2.5" (63mm)	2.5" (63mm)
Water tank	172 gal (65 L)	185 gal (700L)	185 gal (700L)
<b>Valve &amp; Hopper</b>			
S-Valve type (heavy duty cast)	2018	2318	2318
Reduction	8" to 6" (200 to 150mm)	8" to 6" (200 to 150mm)	8" to 6" (200 to 150mm)
Hopper capacity	19.4 cu ft (55 L)	19.4 cu ft (55L)	19.4 cu ft (550L)
Hopper height	50" (1270mm)	49" (1250mm)	49" (1250mm)

Maximum theoretical values listed.

Note: Maximum output and pressure cannot be achieved simultaneously.

\* Standard delivery line system rated at max line pressure of 1233 psi (85 bar)

\*\* 6" slump, 125mm delivery pipe, 70 yd<sup>3</sup>/hr end of line output.

\*\* Consult factory for model specifications.

Photographs represented in this brochure are for informational purposes only and may depict optional or additional equipment not offered as standard.

Always refer to the appropriate owners manual for safe and proper operation of Putzmeister equipment.



Putzmeister America, Inc.  
1733 90th Street  
Sturtevant, WI 53177 USA  
Telephone (262) 886-3200  
(800) 884-7210  
Facsimile (262) 884-6338  
www.putzmeister.com



Authorized Distributor