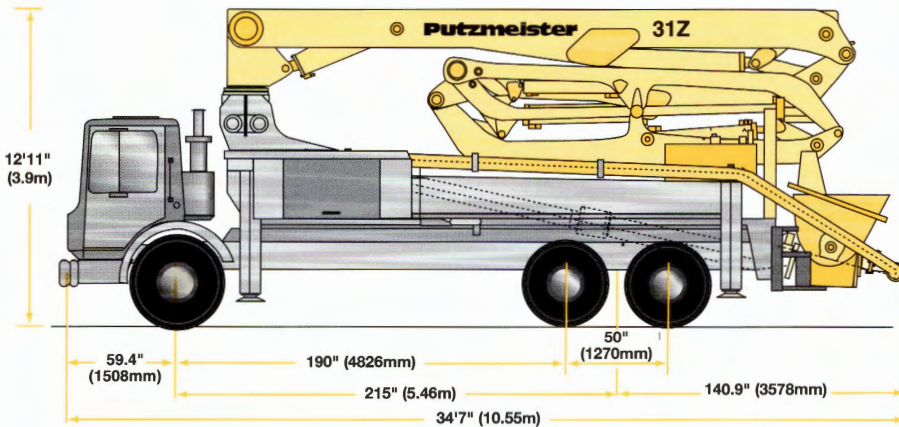


Specifications

31Z-Meter Concrete Pump



Truck-Mounted Specifications

Based on Model Mack MR 688S with .16H pump cell.

| | | |
|---------------------|------------|------------|
| Length | 34' 7" | (10.55m) |
| Width | 8' 2" | (2.50m) |
| Height | 12' 11" | (3.93m) |
| Wheelbase | 215" | (5461mm) |
| Front axle weight | 19,431 lbs | (8,822kg) |
| Rear axle weight | 35,849 lbs | (16,275kg) |
| Approx total weight | 55,280 lbs | (25,097kg) |

Weights are approximate and include pump, boom, truck, full hydraulic oil, driver and some fuel. Varies with options selected.

Dimensions will vary with different truck makes, models and specifications.

Boom Specifications • Z-Fold Design

Height & Reach

| | | |
|----------------------------|--------|----------|
| Vertical reach | 100'1" | (30.50m) |
| Horizontal reach | 86'11" | (26.50m) |
| Reach from front of truck* | 79' | (24.10m) |
| Reach depth | 64'1" | (19.55m) |
| Unfolding height | 18'9" | (5.73m) |

5-Section Boom

| | | |
|--------------------------|-------|---------|
| 1st section articulation | 98° | |
| 2nd section articulation | 180° | |
| 3rd section articulation | 240° | |
| 4th section articulation | 241° | |
| 5th section articulation | 255° | |
| 1st section length | 24'6" | (7.48m) |
| 2nd section length | 16'8" | (5.08m) |
| 3rd section length | 16'5" | (5.00m) |
| 4th section length | 15'8" | (4.78m) |
| 5th section length | 13'8" | (4.16m) |

General Specs

| | | |
|--|--------|---------|
| Pipeline size (ID) metric ends | 5" | (125mm) |
| with couplings | 5.5" | (140mm) |
| Rotation | 365° | |
| End hose-length (heavy duty) | 10' | (3m) |
| End hose-diameter | 5" | (125mm) |
| Outrigger spread L-R-front telescopic diagonal | 20'8" | (6.35m) |
| Outrigger spread L-R-rear swing-out | 22'10" | (6.96m) |

Pump Specifications

31Z.12L

31Z.16H

.20H pump also available

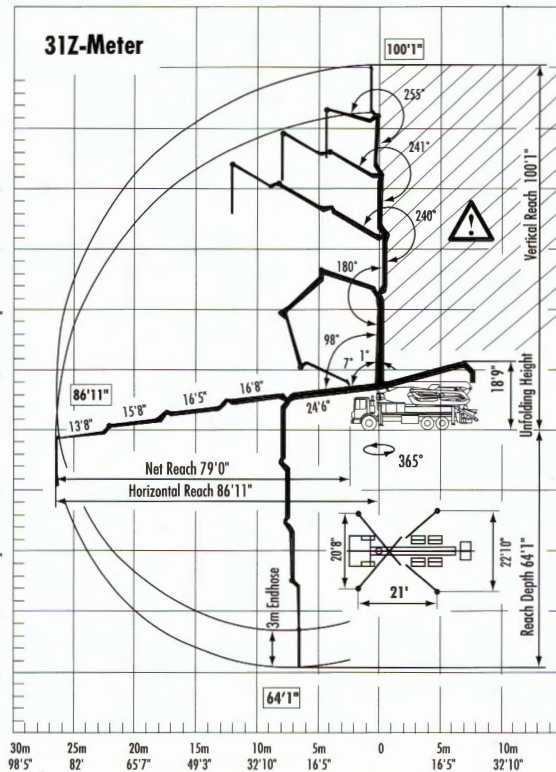
| | | |
|----------------------------------|---|---|
| Output- rod side | 142 yd ³ /hr (109m ³ /hr) | 210 yd ³ /hr (160m ³ /hr) |
| piston side | 85 yd ³ /hr (65m ³ /hr) | 146 yd ³ /hr (112m ³ /hr) |
| Pressure- rod side | 1015 psi (70 bar) | 1233 psi (85 bar) |
| piston side | 1624 psi* (112 bar)* | 1885 psi* (130 bar)* |
| Concrete cylinder diameter | 9" (230mm) | 9" (230mm) |
| Stroke length | 83" (2100mm) | 83" (2100mm) |
| Max strokes per minute- rod side | 21 | 31 |
| piston side | 13 | 21 |
| Volume control | 0-Full | 0-Full |
| Vibrator | Standard | Standard |
| Hard chromed concrete cylinders | Standard | Standard |
| Hydraulic system | Free Flow | Free Flow |
| Hydraulic system pressure | 5075 psi (350 bar) | 5075 psi (350 bar) |
| Differential cylinder diameter | 5.1" (130mm) | 5.5" (140mm) |
| Rod diameter | 3.1" (80mm) | 3.1" (80mm) |
| Maximum size aggregate | 2.5" (63mm) | 2.5" (63mm) |
| Water Tank | 185 gal (700L) | 185 gal (700L) |

Maximum theoretical values listed.

* Applies to units mounted on PMA stock truck-Mack MR 688S

• Standard delivery line system rated at max line pressure of 1233 psi (85 bar)

Right to make technical amendments reserved.



End hose not to be operated in caution area.



Putzmeister America
1733 90th Street
Sturtevant
Wisconsin 53177 USA

Telephone (262) 886-3200
(800) 884-7210
Facsimile (262) 884-6338
www.putzmeister.com